



DriClad  
Parking Garage  
Methuen, MA  
Photo: Jim Lundell

- Low-cost, uniform density & thickness mineral board
- Installs dry without disruption to other trades
- Year-round application without work-area enclosure
- UL Classified for Up to 3 hours



## DESCRIPTION

Albi DriClad is based on naturally occurring basalt volcanic rock. The patented manufacturing process transforms crushed volcanic rock into a lightweight, durable board from finely spun threads bound with a proprietary resin. For use on structural steel in lieu of conventional, soft fireproofing, this material offers excellent fire safety properties. It is supplied as 4' x 6' foot boards.



## ALBI DRICLAD ADVANTAGES

- Noncombustible
- High insulating value
- No steel surface preparation required
- High sound absorption
- No leachable chloride content
- Non-capillary and non-hygroscopic
- Completely free of asbestos, CFCs and HFCs
- Chemically inert
- Installs dry without disruption to other trades
- Applies year-round in all weather conditions
- Factory-controlled density and thickness

## WHERE TO SPECIFY

Specify Albi DriClad to provide fire resistance for structural steel on both new and retrofit construction. DriClad is compatible with all materials with which it is likely to be used in normal industrial and commercial applications. It can also be applied to a wide range of nonferrous metals as well as elements such as walls, ventilation ducts, doors, and conduit. DriClad is available in a range of thicknesses beginning at 7/8".

## PROVEN PERFORMANCE

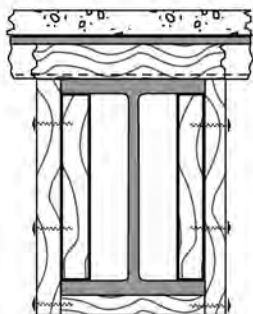
The superior performance of Albi DriClad fireproofing materials has been verified under a wide range of applications throughout the world. DriClad is manufactured to the most stringent quality criteria and conforms to, or exceeds, all relevant American and worldwide standards. DriClad is classified as noncombustible in accordance with ASTM E136. Since DriClad has a low binder content, it shows zero flame spread and smoke development, per ASTM E84.

Typical System	Size	Hourly Rating	Thickness in. (mm)	UL Design No.
Columns - Wide Flange	W10 x 49 (254 x 254 mm)	1	3/4 (19.1)	X313
		1-1/2	1-1/4 (32)	X313
		2	1-1/2 (38)	X313
		3	2-1/2 (64)	X313
		4	1-1/2 (38)	X313
Columns - Wide Flange	W12 x 120 (312.9 x 332.7 mm)	1	3/4 (19.1)	X313
		1-1/2	1-1/4 (32)	X313
		2	1-1/2 (38)	X313
		3	2-1/2 (64)	X313
		4	1-1/2 (38)	X313
Beams - Roof / Ceiling (Restrained & Unrestrained)	W8 x 31 (203 x 203 mm)	1	3/4 (19.1)	S301
		1-1/2	3/4 (19.1)	S301
		2 (restrained)	1-1/2 (38)	S301
		2 (unrestrained)	1-5/8 (41)	S301
		3 (restrained)	1-5/8 (41)	S301
Beams - Floor / Ceiling (Restrained & Unrestrained)	W8 x 31 (203 x 203 mm)	1	3/4 (19.1)	N307
		1-1/2	3/4 (19.1)	N307
		2 (restrained)	1-1/2 (38)	N307
		2 (unrestrained)	1-5/8 (41)	N307
		3 (restrained)	1-5/8 (41)	N307
Beams - Unprotected Roof / Ceiling (Restrained & Unrestrained)	W8 x 31 (203 x 203 mm)	1	3/4 (19.1)	P930
		1-1/2	3/4 (19.1)	P930
		2 (restrained)	3/4 (19.1)	P930
		2 (unrestrained)	1-5/8 (41)	P930
Beams - Protected Roof / Ceiling (Restrained & Unrestrained)	W8 x 31 (203 x 203 mm)	1	1 (25.4)	P302
Assembly - Floor / Ceiling (Restrained) <sup>1</sup>	W8 x 31 (203 x 203 mm)	1	3/4 (19.1)	D929
		1-1/2	3/4 (19.1)	D929
		2	3/4 (19.1)	D929
		3	1-5/8 (41)	D929
Assembly - Floor / Ceiling (Unrestrained) <sup>1</sup>	W8 x 31 (203 x 203 mm)	1	3/4 (19.1)	D929
		1-1/2	3/4 (19.1)	D929
		2	1-5/8 (41)	D929
Assembly - Protected Floor / Ceiling (Restrained & Unrestrained)	W8 x 31 (203 x 203 mm)	1	3/4 (19.1)	D303
		1-1/2	3/4 (19.1)	D303
		2	3/4 (19.1)	D303
		2	1-5/8 (41)	D303
		3	1-5/8 (41)	D303
Assembly - Floor / Ceiling (Restrained & Unrestrained)	W8 x 31 (203 x 203 mm)	3	1 (25.4)	G301
Assembly - Protected Floor / Ceiling (Restrained & Unrestrained)	W8 x 31 (203 x 203 mm)	1	3/4 (19.1)	J301
		1-1/2	3/4 (19.1)	J301
		2 (restrained)	3/4 (19.1)	J301
		2 (unrestrained)	1-5/8 (41)	J301
		3 (restrained)	1-5/8 (41)	J301

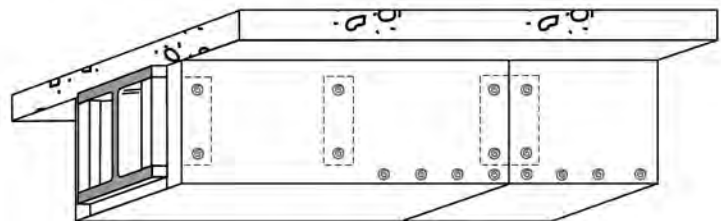
<sup>1</sup> Requiere montaje con protección.

## EASY APPLICATION

Albi DriClad installs without the adhesion and compatibility concerns associated with spray applied soft fireproofing. Although DriClad is easily cut with a knife or hand saw, the most efficient cutting device is a table saw. A knife may be used to cut around obstructions and structural members. Strips 4" wide x 1-1/2" minimum thickness are fit tightly between the top and bottom flanges 24" on center. Material is then cut and installed to box in the steel. AlbiScrews™ fasten the material 6" on center. DriClad is shipped on pallets in stretch-wrapped polyethylene for ease of handling and short term storage.



Profiled metal deck/roof over steelwork



AlbiScrews @ 6" centers

## TYPICAL INSTALLATIONS

- Commercial Buildings
- Industrial Plants
- School Gymnasiums
- Warehouses
- Parking Garages
- Power Plants
- Elevator Shafts

## PHYSICAL PROPERTIES

Property	ASTM Test Method	Value
Dry Applied Density (Average)	- 10.5	PCF
Compressive Strength @ 10%	ASTM C165	936 PSF
Tensile Strength	ASTM C209	155 PSF
Moisture Absorption	ASTM C209	0.50% By Volume
Moisture Adsorption	ASTM C553	0.03% By Volume
Sound Absorption	ASTM C423	NRC - 0.80
Deflection	ASTM E759	No Delamination
Thermal Performance (R Value)	ASTM C158	4.2 (per inch)
Corrosion & Fungi Resistance	ASTM C665	Non Corrosive/No Fung Growth
Leachable Chlorides	ASTM C871	No Leachable Chlorides
Air Erosion	ASTM C1071	0 @ 5800 ft/min
Fire Hazard Classification	ASTM E136	Non Combustible
Flame Spread	ASTM E84	0 (Class A)
Smoke Developed	ASTM E84	0 (Class A)



Other Albi DriClad Literature

- Albi DriClad Long Form Guide Specification
- Albi Fireproofing Catalog
- Albi DriClad Field Application Manual
- Albi DriClad CSI SPEC-DATA®
- Albi DriClad CSI MANU-SPEC®

Also inquire about these fireproofing products from Albi:

### Albi Clad 800

Intumescent fireproofing, withstands severe weathering and abuse

### Albi Clad TF

Water-based, thin-film intumescent fireproofing for exposed interior structural steel

### Albi Clad FP

Water based, thin-film intumescent fireproofing for exposed wood, wallboard, and other combustible assemblies

## ALBI MANUFACTURING

For more than four decades, Albi fireproofing materials have demonstrated superior performance and reliability under a range of extreme environments worldwide. These proprietary formulations also meet global building codes and insurance requirements. Lightweight Albi materials provide long-term protection, outstanding durability, aesthetic properties and are completely free from asbestos.



**Albi Manufacturing** Division of StanChem, Inc.

401 Berlin Street, East Berlin, Connecticut 06023 U.S.A.

Tel: (860) 828-0571

Fax: (860) 828-3297

www.albi.com

info@albi.com